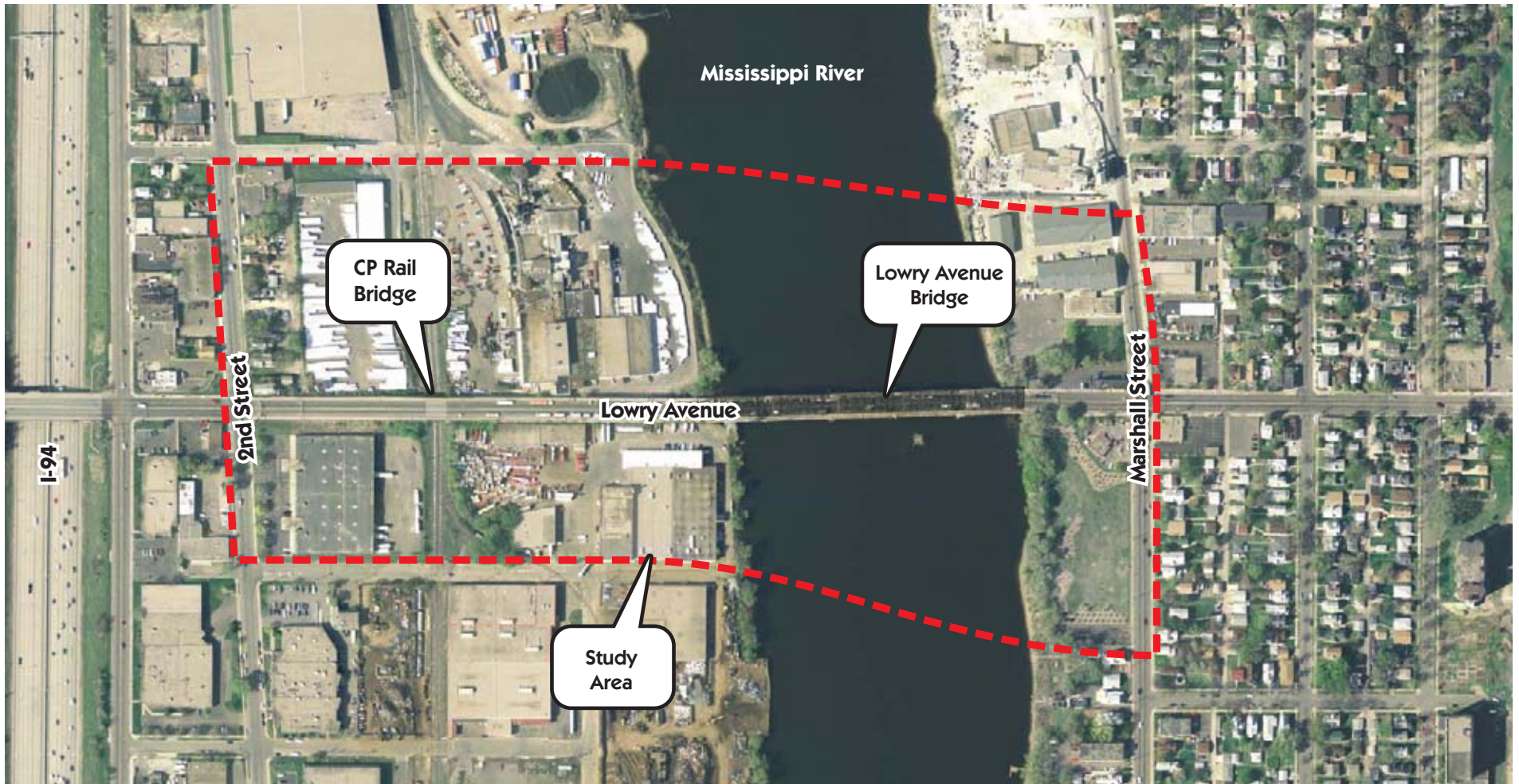


Study Area and Project Context

Lowry Avenue Mississippi River Crossing



Project Intent

Lowry Avenue Mississippi River Crossing

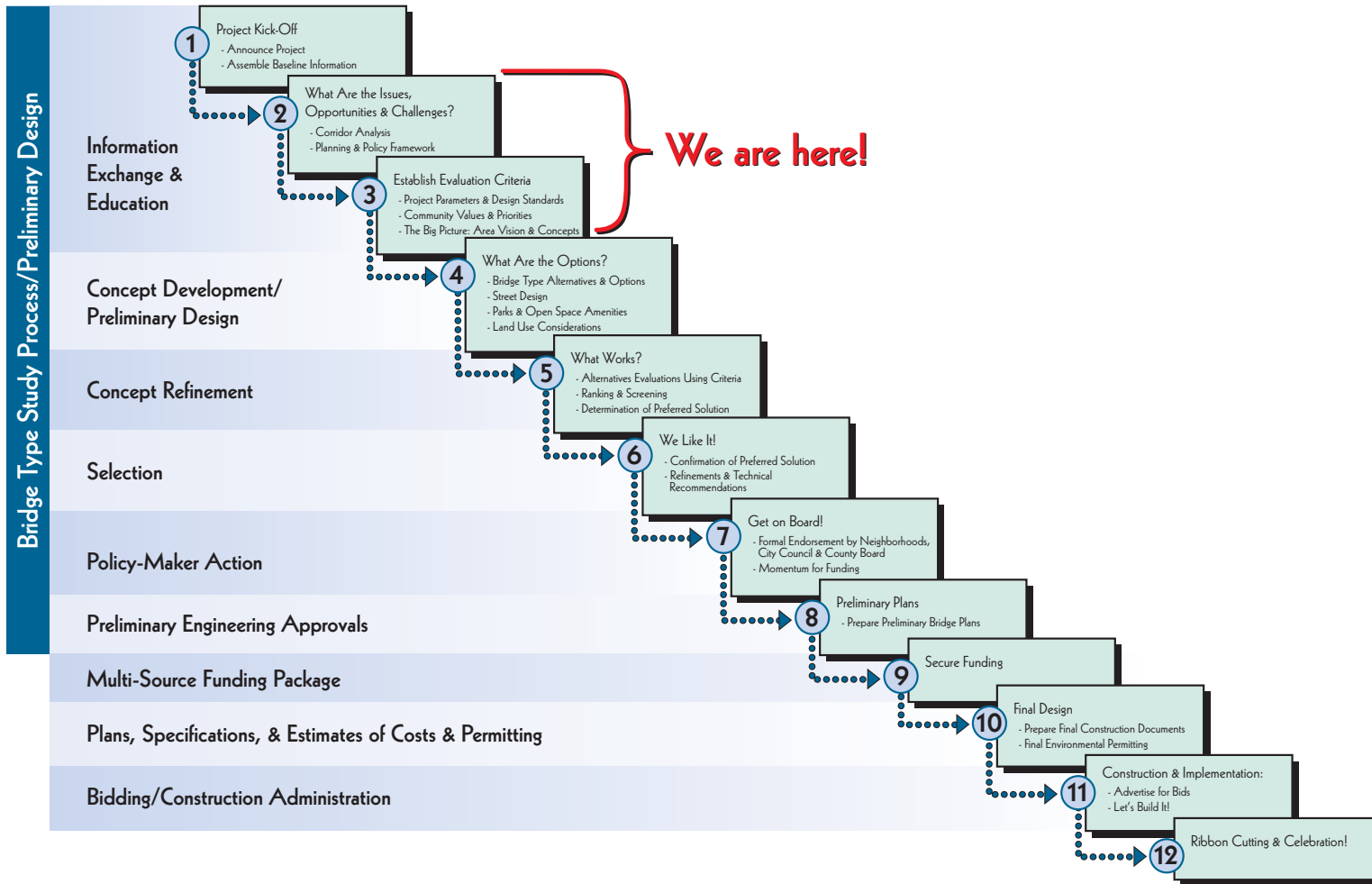
The primary intent of the Lowry Avenue Bridge Project is to develop a preferred bridge and approach road design that Hennepin County can build. Key issues to be addressed include:

- Identifying the bridge type, design, and appearance.
- Determining whether or not the railroad bridge will be included in the reconstruction.
- Establishing the roadway width and making provisions for pedestrians and bicycles.
- Accommodating existing and future land use.
- Assessing environmental impacts.
- Determining project costs and likely funding.



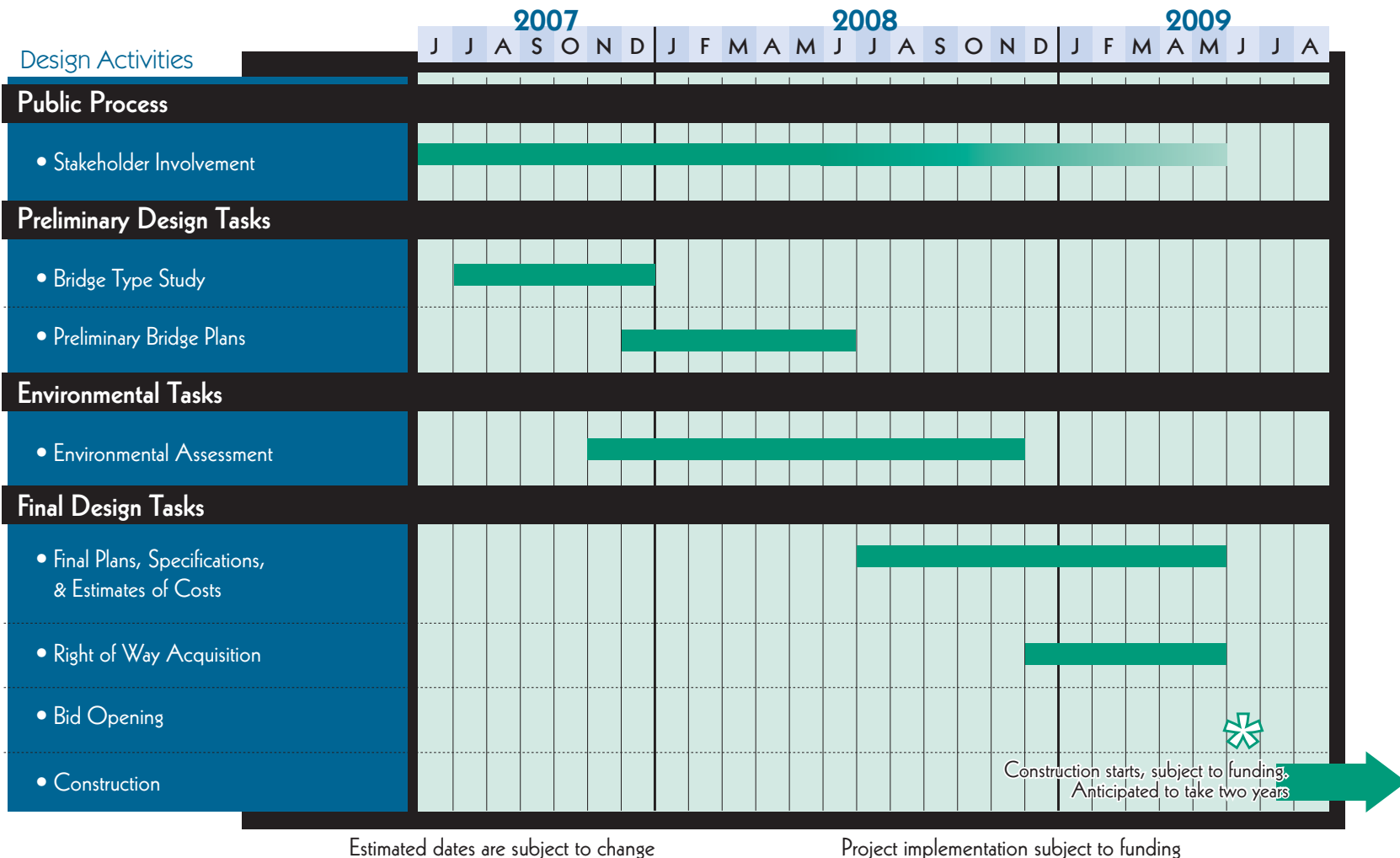
Project Process

Lowry Avenue Mississippi River Crossing



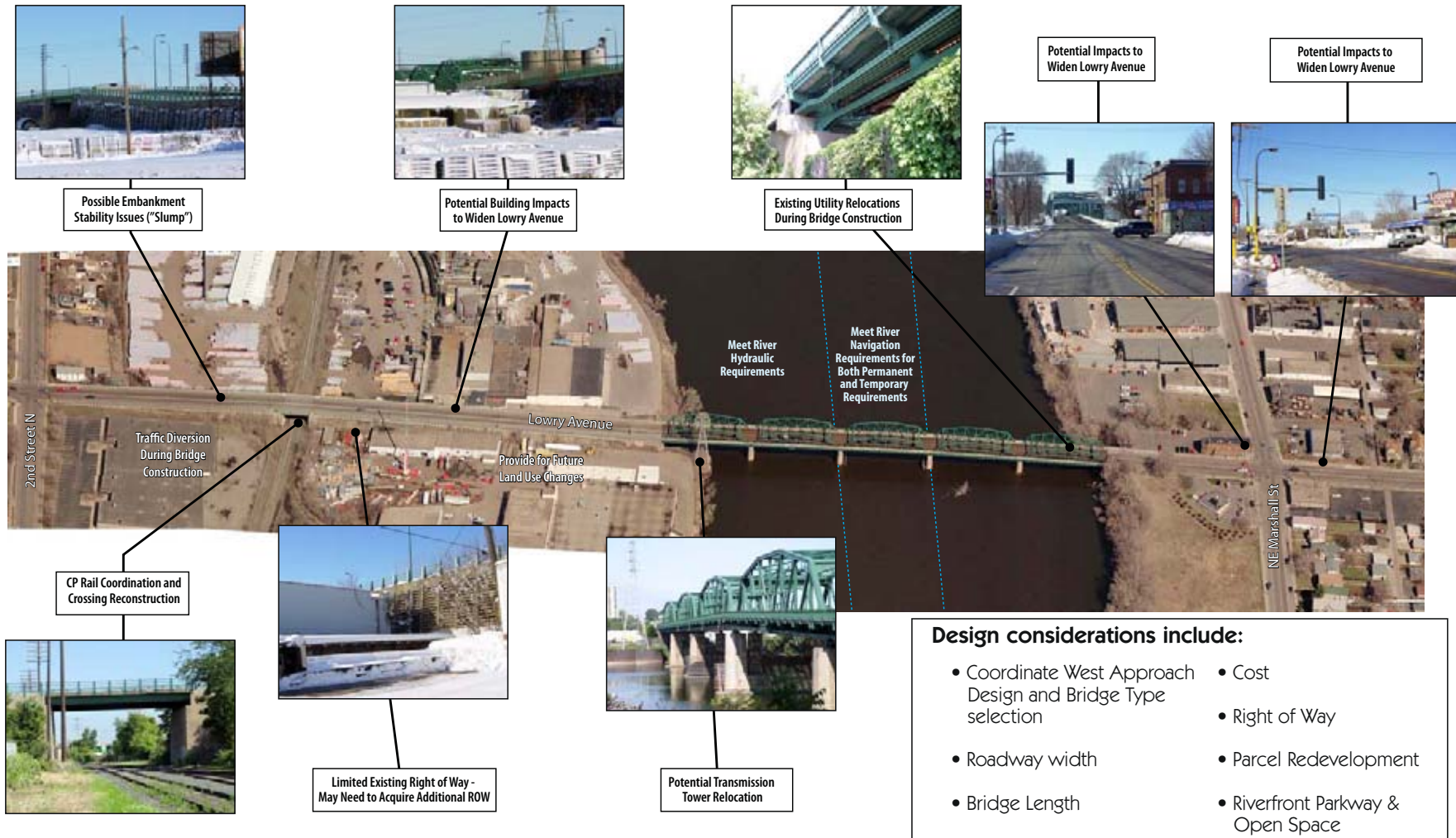
Project Schedule

Lowry Avenue Mississippi River Crossing



Issues and Challenges

Lowry Avenue Mississippi River Crossing



Prior Studies

Lowry Avenue Mississippi River Crossing

Several area plans have included the Lowry Avenue Bridge and surrounding neighborhoods. These plans are being studied to provide relevant information about the new Lowry Avenue Bridge.

- Above the Falls-Phase I, West Bank (2006)
- Upper Harbor Terminal Redevelopment Study (2004)
- Lowry Avenue Corridor Plan (2002)
- Above the Falls: A Master Plan for the Upper River in Minneapolis (1999)



Pedestrian and Bicycle Considerations

Lowry Avenue Mississippi River Crossing

Several plans have associated Lowry Avenue with the following pedestrian and bicycle amenities:

MINNEAPOLIS BICYCLE PLAN, 2001 – BICYCLE/PEDESTRIAN PROVISIONS

- Lowry Avenue/Lowry Avenue NE Bikeway – On-street proposed bike lane (candidate on-street facility – 4 feet or more in width)
- Lowry Avenue/Lowry Avenue NE – Proposed bike trail (candidate off – street facility)

HENNEPIN COUNTY BICYCLE TRANSPORTATION PLAN

- Lowry Avenue Bikeway (on/off roadway)

ABOVE THE FALLS: A MASTER PLAN FOR THE UPPER RIVER IN MINNEAPOLIS, 1999

- Pedestrian promenade along river south of Lowry Avenue
- Burlington Northern Bridge converted to a pedestrian and bicycle facility
- “Riverway streets” with enhanced streetscapes and signage to riverfront parks
- Lowry Plaza, a wide pedestrian mall, as the front door address for small office and retail buildings
- Lowry Bridge Park – one of the larger parks on the Upper River
- Neighborhood Park – west of the railroad corridor, north of 34th Avenue North
- Restoration Park – stretching north from Lowry Bridge Park
- West River Parkway – the parkway slips under the new Lowry Bridge and back toward the river
- Recreational and walking trails connecting to similar trails in North Mississippi Regional Park and beyond
- A pedestrian and bicycle deck attached to the Soo Line Bridge

UPPER HARBOR TERMINAL REDEVELOPMENT STUDY, JULY 9, 2004

- Trail connection to North Mississippi Regional Park
- Trail connection across the CP Rail Bridge
- Bike paths and pedestrian trails along the parkway

LOWRY AVENUE CORRIDOR PLAN, MAY 2002

- Basic lane recommendations show that there is sufficient right-of-way width between Lyndale and University Avenue to adequately accommodate other modes of transportation.
- Where curb parking is provided, it should be placed in parking bays to minimize conflict with on-street bicycle lanes.



Bridge Type Examples

Lowry Avenue Mississippi River Crossing



Cable-stayed

CENTENNIAL BRIDGE, PANAMA



Concrete Box Girder

OLYMPIA-YASHIRO FRIENDSHIP BRIDGE, WASHINGTON



Extradosed

ST CROIX RIVER CROSSING, MINNESOTA



Steel Arch

DAGU BRIDGE, CHINA



Suspension

OAKLAND BAY BRIDGE, CALIFORNIA



Steel Girder

BROADWAY STREET BRIDGE, MINNESOTA

Neighboring Bridges

Lowry Avenue Mississippi River Crossing



Broadway Street Bridge

STEEL GIRDER BRIDGE



Washington Avenue Bridge

STEEL GIRDER BRIDGE



Franklin Avenue Bridge

CONCRETE ARCH BRIDGE



Hennepin Avenue Bridge

SUSPENSION BRIDGE

Next Steps

Lowry Avenue Mississippi River Crossing

Tell Us What You Think – Fill Out a Survey!

Next Open House: Fall 2007

Find more information at www.lowryavenuebridge.com

